



HEADLEY DRIVE

EPSOM DOWNS

www.michael-everett.co.uk

49 HEADLEY DRIVE

EPSOM DOWNS, KT18 5RP



1 RECEPTION ROOMS



MODERN KITCHEN



2 BEDROOMS



MODERN BATHROOM

APROX. 635.71 FT² | 59.06 M²

A spacious and well presented first floor maisonette conveniently located midway between Tadworth and Tattenham Corner.

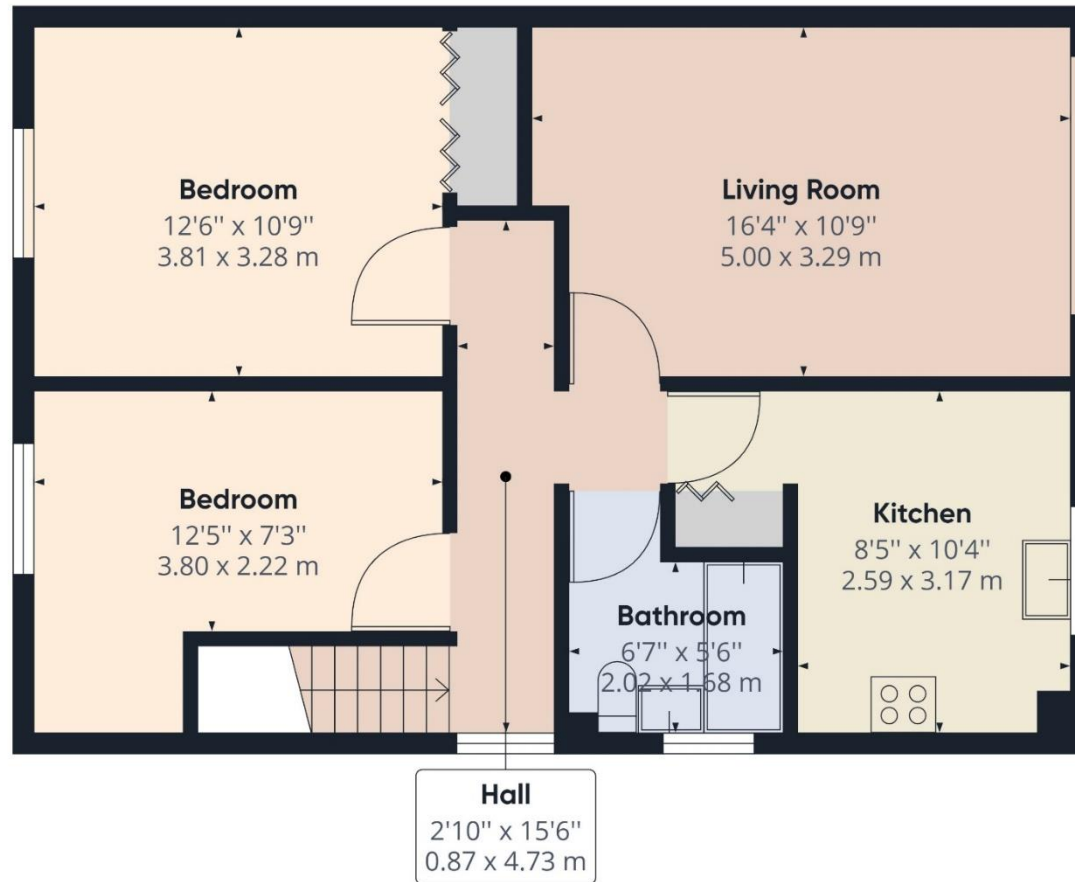
The property benefits from a private entrance with own front door, a first floor landing with access to a large living room with lounge and dining areas and views over the local allotments to the rear, a modern fitted kitchen, two bedrooms and a modern bathroom.

Outside, there is area of garden to the front, a private store cupboard and a single garage in a block.

Tattenham Corner shops and station are approximately 10 minutes' walk as are the open spaces of Epsom Downs whilst the larger towns of Epsom and Banstead are easily accessed.

OFFERS IN EXCESS OF £300,000







WALTON ON THE HILL 61 Walton Street, Walton-on-the-Hill, Surrey KT20 7RZ
01737 814877



IMPORTANT We would inform prospective purchasers that these sales particulars have been prepared as a general guide only. A detailed survey has not been carried out, nor the services, appliances and fittings tested. Room sizes should not be relied upon for furnishing purposes and are approximate. If floor plans are included, they are for guidance only and illustration purposes only and may not be to scale. If there are any important matters likely to affect your decision to buy, please contact us before viewing the property.

michael-everett.co.uk